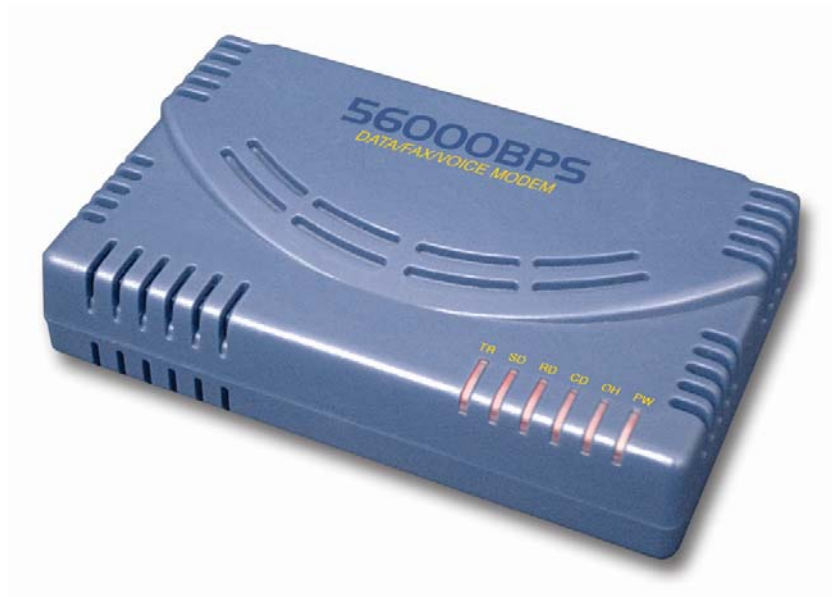




SKUBA FAX MODEM 56K

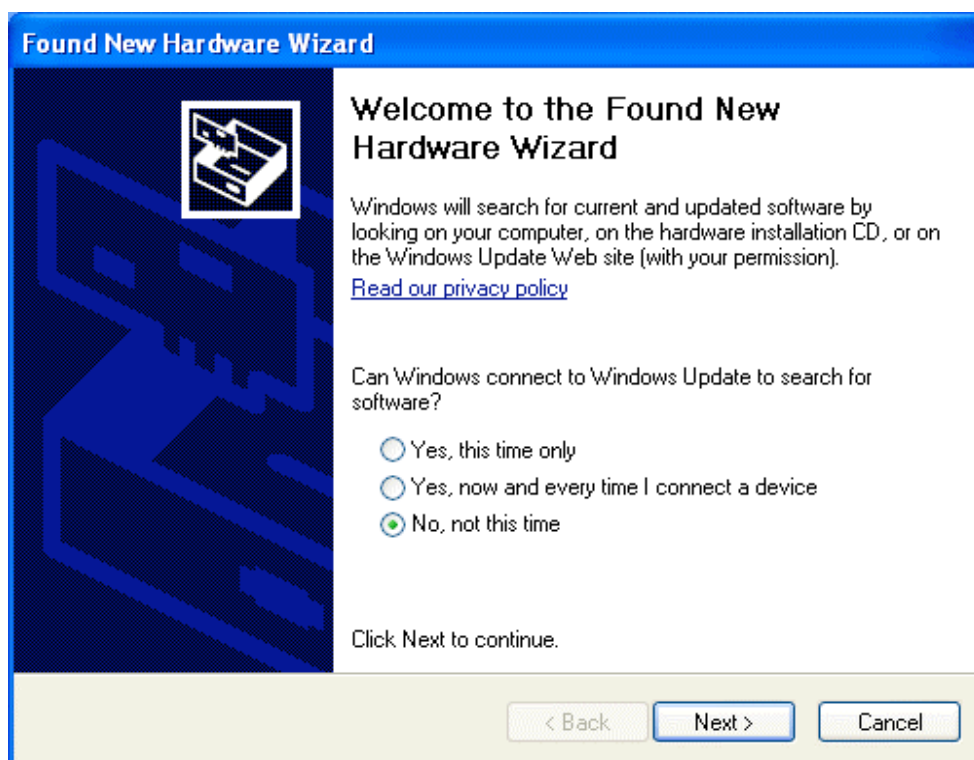


Guida di Installazione Rapida

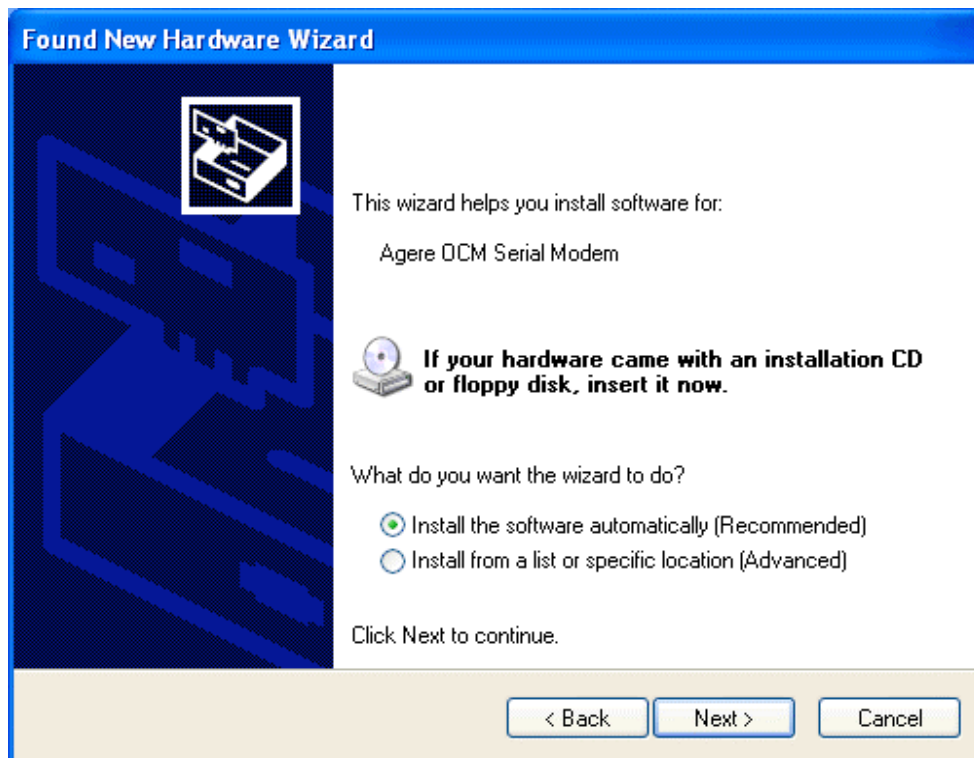
www.hamletcom.com

Informiamo che il prodotto è conforme alle normative europee e certificato CE secondo i seguenti standard:

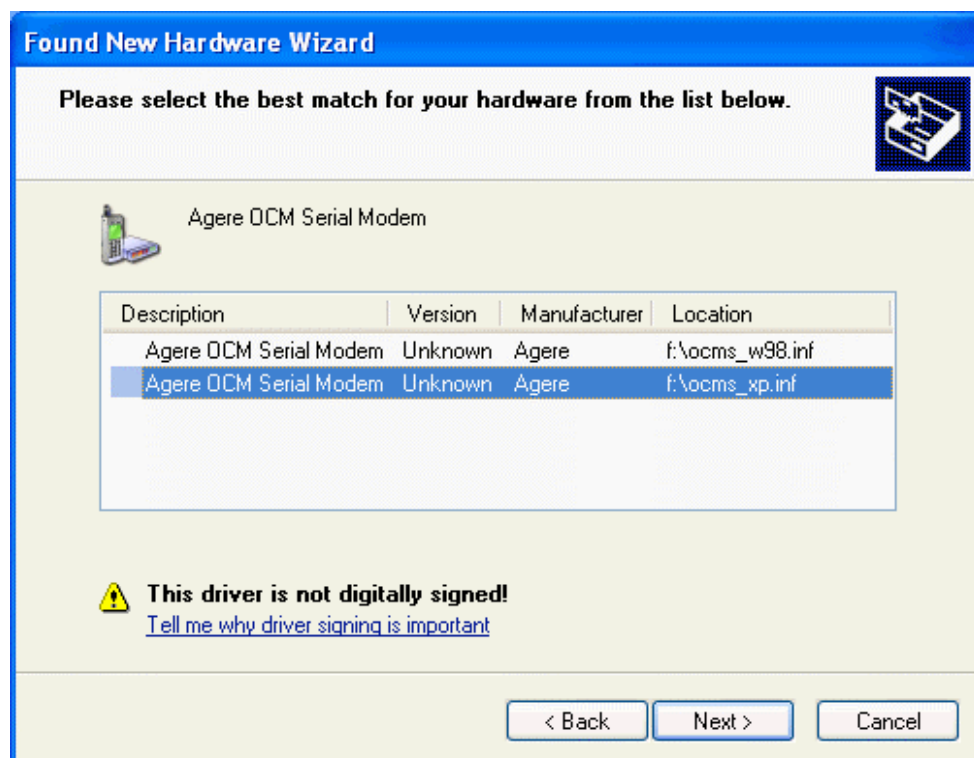
89/336 CEE, EN 55022 (1998) Classe B, EN 61000-3-2 :ED.2 (2001), EN 61000-3-3 (1995), EN 55024 (1998), EN 61000-4-2 (1995), EN 61000-4-3 (1997), EN 61000-4-4 (1995), EN 61000-4-5 (1995), EN 61000-4-6 (1996), EN 61000-4-11 (1994)



A) Selezionare l'opzione "**No, not this time**" e cliccare "**Next**".



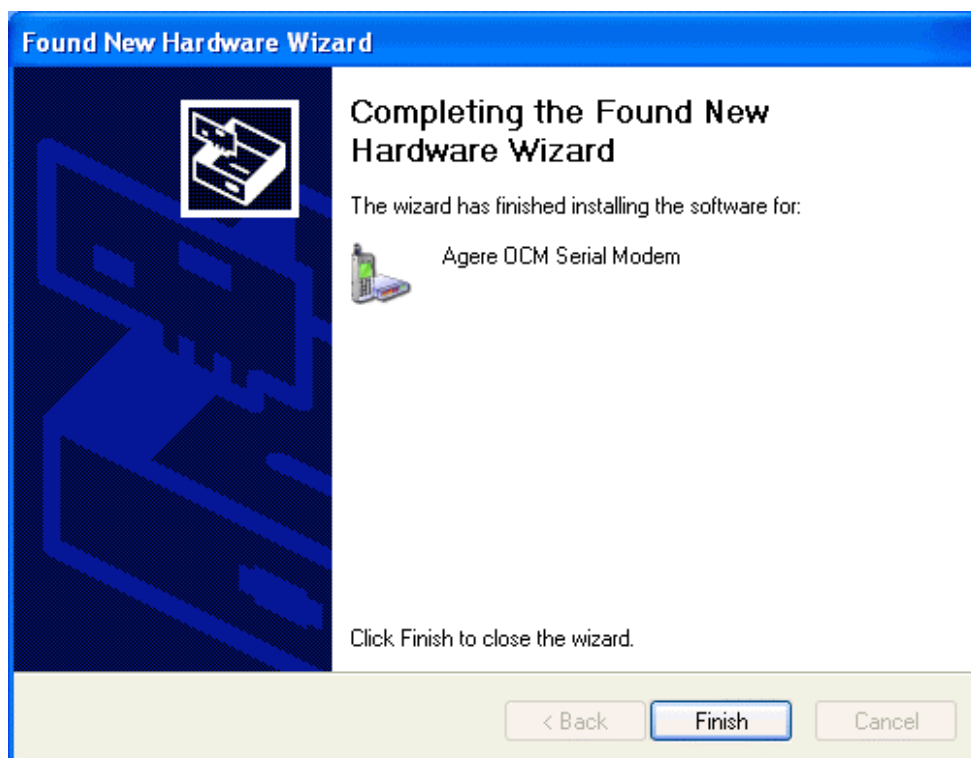
B) Selezionare l'opzione "Install the software automatically (Recommended)" e quindi cliccare "Next".



C) Scegliere i driver "Agere OCM Serial Modem" e cliccare "Next".



D) Cliccare su "**Continue Anyway**" per proseguire.



E) Cliccare quindi "**Finish**" per completare l'installazione.