



PARALLEL PRINT SERVER

NETWORK DATA TRANSFER RATE 10/100MBPS



Quick Installation Guide

HPS01PP2

www.hamletcom.com

Dear Customer,

thanks for choosing an Hamlet product. Please carefully follow the instructions for its use and maintenance and, once this item has run its life span, we kindly ask You to dispose of it in an environmentally friendly way, by putting it in the separate bins for electrical/electronic waste, or to bring it back to your retailer who will collect it for free.



We inform You this product is manufactured with materials and components in compliance with ROHS directives: 2002/95/CE; with RAEE Directives: 2003/96/CE, Italian Legislative Decree 2005/151 and following EEC Directives:

EN 55022: 1998 + A1: 2001 + A2: 2003

EN 61000-3-2: 2000

EN 61000-3-3: 1995 + A1: 2001

EN 55024: 1998 + A1: 2001 + A2: 2003

EN 61000-4-2: 1995 + A1: 1998 + A2: 2001

EN 61000-4-3: 2002 + A1: 2002

EN 61000-4-4: 1995 + A2: 2001

EN 61000-4-5: 1995 + A1: 2001

EN 61000-4-6: 1996 + A1: 2001

EN 61000-4-8: 1993 + A1: 2001

EN 61000-4-11: 1994 + A1: 2001.



The complete CE declaration of conformity of the product can be obtained by contacting Hamlet at info@hamletcom.com.

The information on the importer for your country are available in the “About Us” section of the Hamlet website at www.hamletcom.com.

Trademarks and Changes

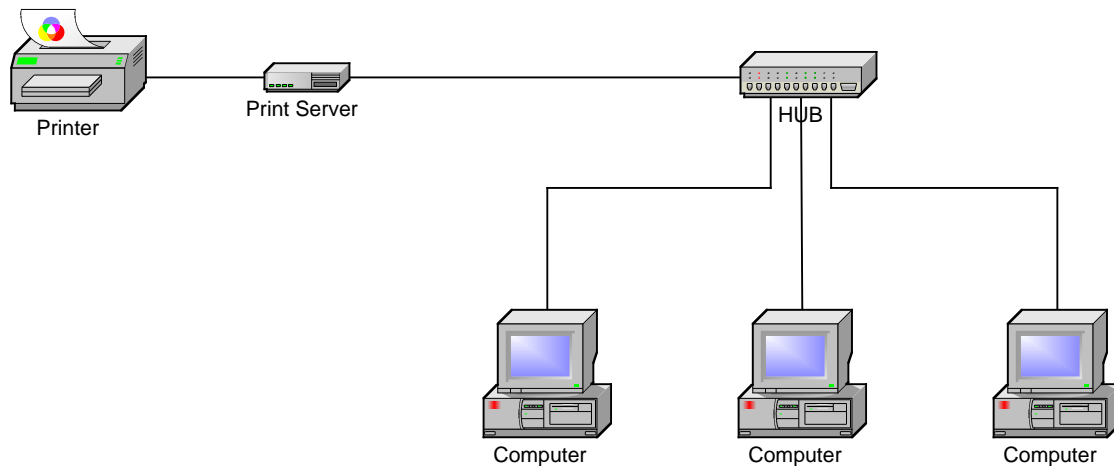
All trademarks and company names mentioned in this manual are used for description purpose only and remain property of their respective owners.

The material in this document is for information only and subject to change without notice. Specifications and appearance are subject to change without prior notice.

Before you start, you should prepare the following items

- One Windows-based PC with print server setup CD
- One printer
- One printer cable
- One HUB

Example of Wired Network with Print Server

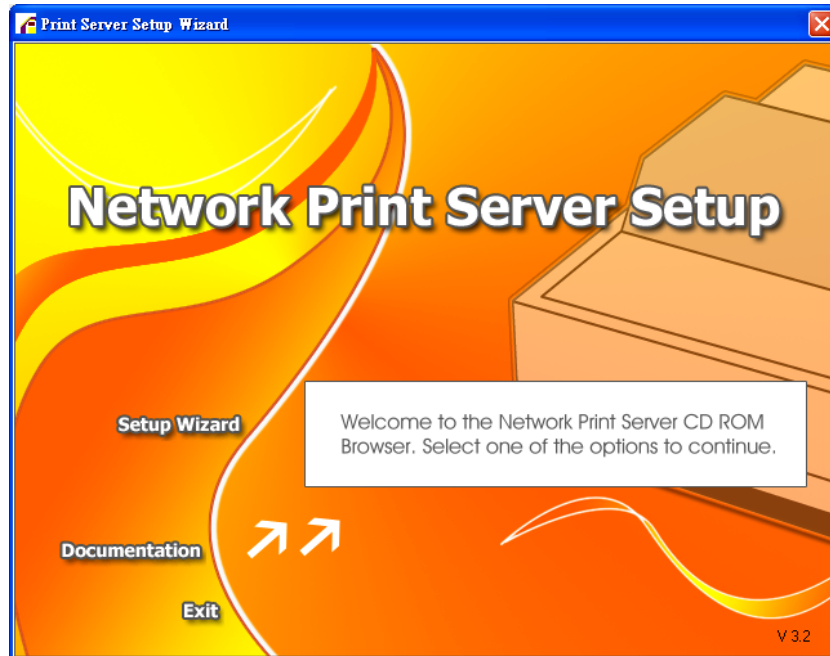


Hardware Installation

1. Turn off the printer's power.
2. Connect the print server to your printer with the supplied printer cable.
3. Turn the printer's power on.
4. Plug the AC power adapter into the power connector on the print server.
5. Wait 10 seconds as part of the print server's Power On Self Test (POST).

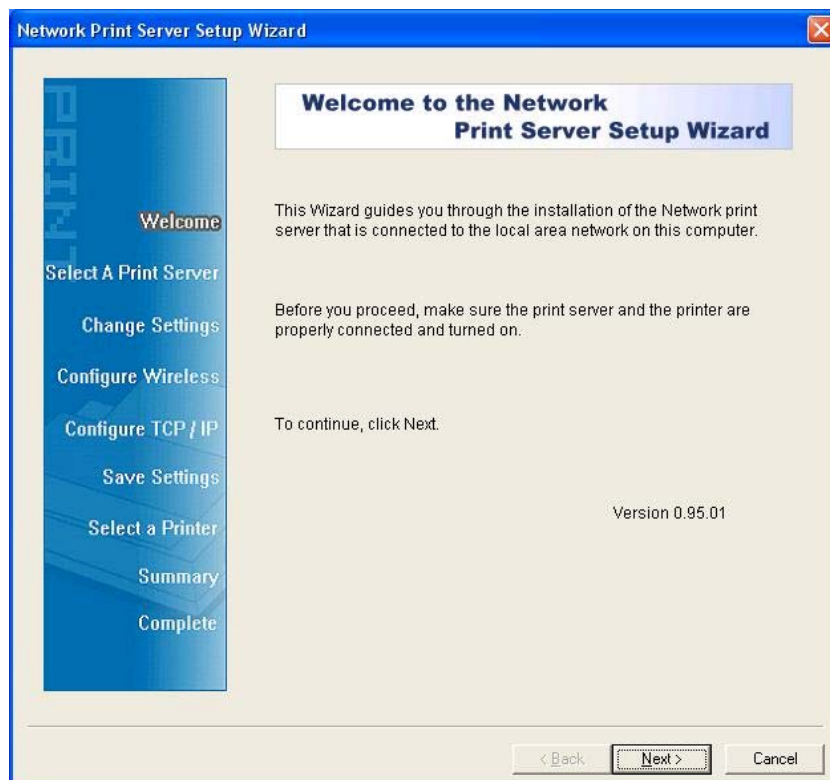
Software Installation

1. To enable network communication with print server, your computer must have a proper IP address, e.g. 192.168.0.100.
2. Insert the setup CD into your CD-drive, and the following message appears.

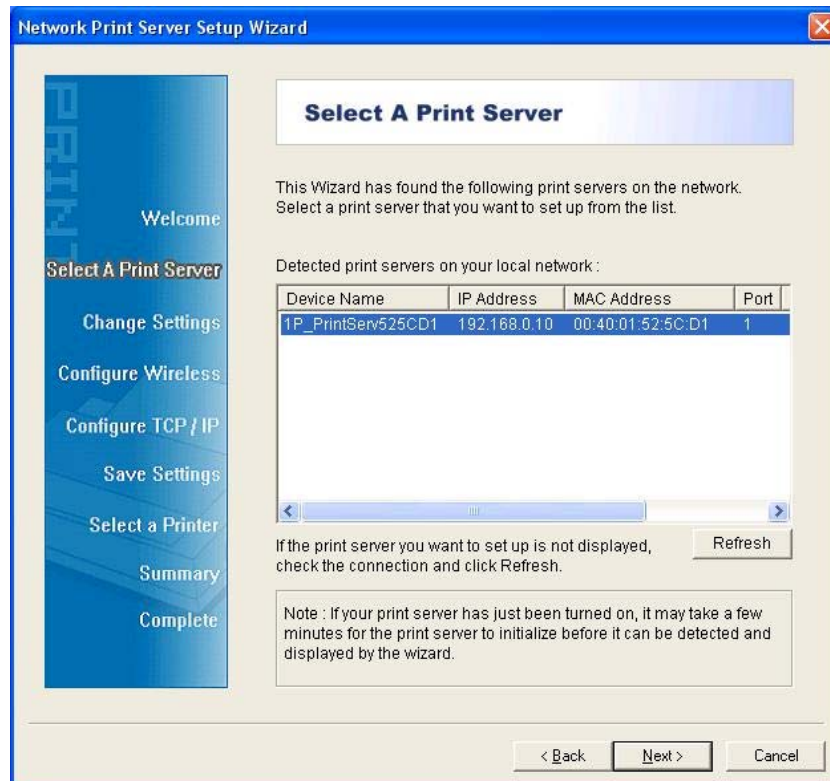


Note: For setup wizard under Windows Vista, you have to choose the **Run as administrator** by right-click the icon on desktop.

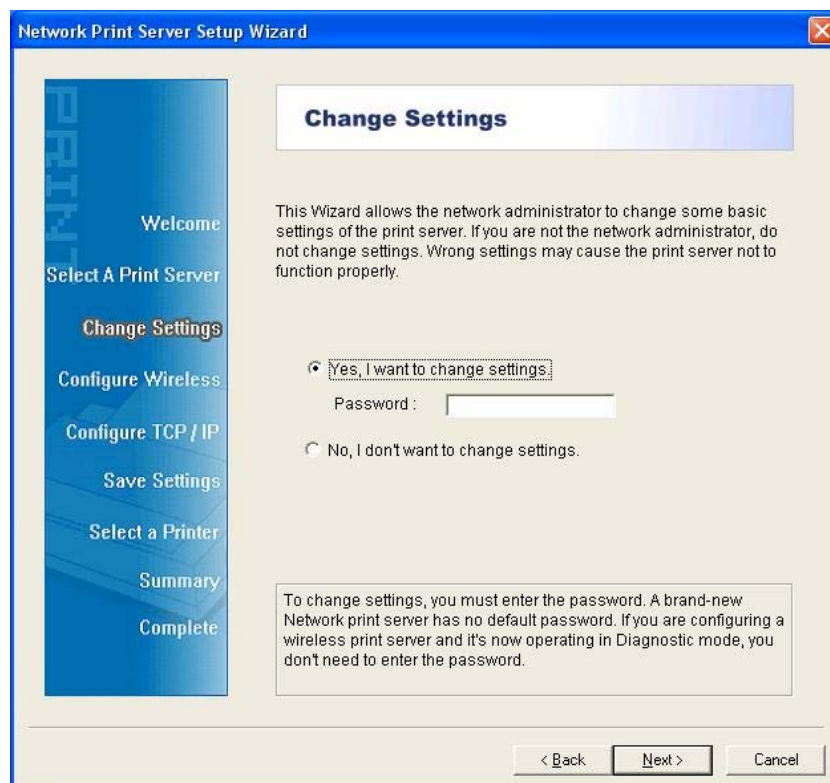
3. Choose **Setup Wizard** to install the print server and configure the connected printer.



4. Click **Next**, the wizard will automatically discover the print server.
5. From the **Select A Print Server** screen, select the print server that you want to configure and click **Next**.



6. On the **Change Settings** screen, select **No** or **Yes**:



Click **No** if you want the print server to keep using the default IP address and keep the default settings, and then click **Next**.

- IP address: 192.168.0.10
- Subnet Mask: 255.255.255.0

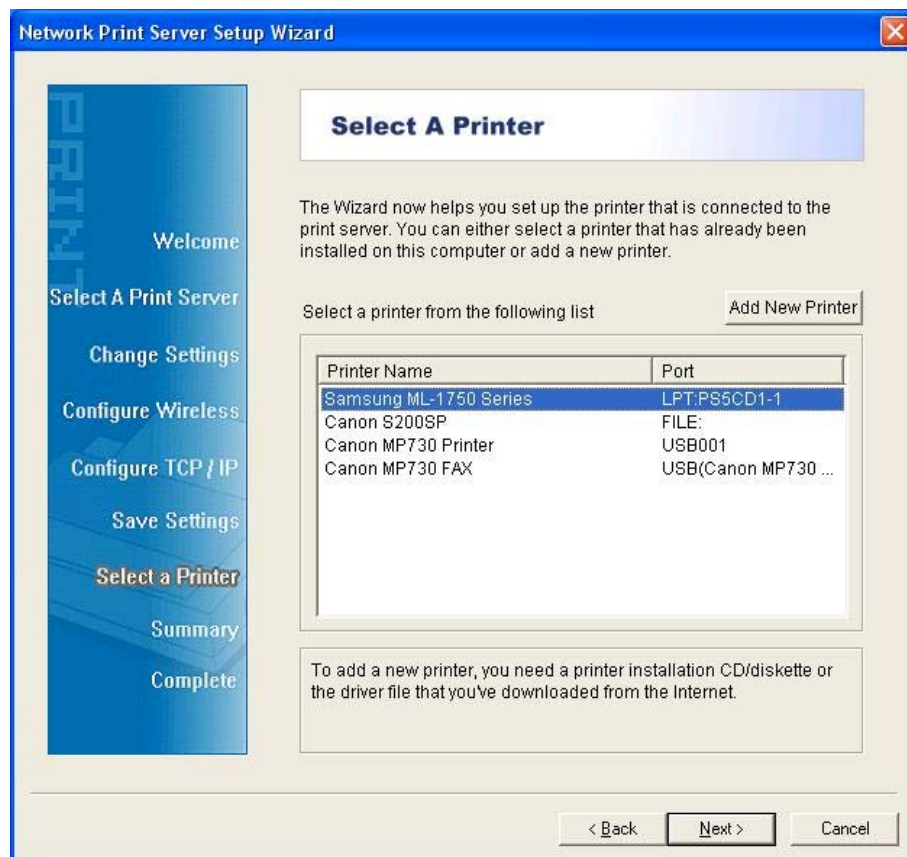
Click **Yes** if you want to change IP address to the print server, and then click **Next**.

Note:

1. The IP address of print server must be within the same subnet as your network adapter.
2. After you save the new IP address, the print server will automatic reboot once to make ready for the new IP address. It may take a couple of seconds.

7. On the **Select A Printer** screen, select an already configured printer from the list, click **Next** and then **Finish** to complete the installation.

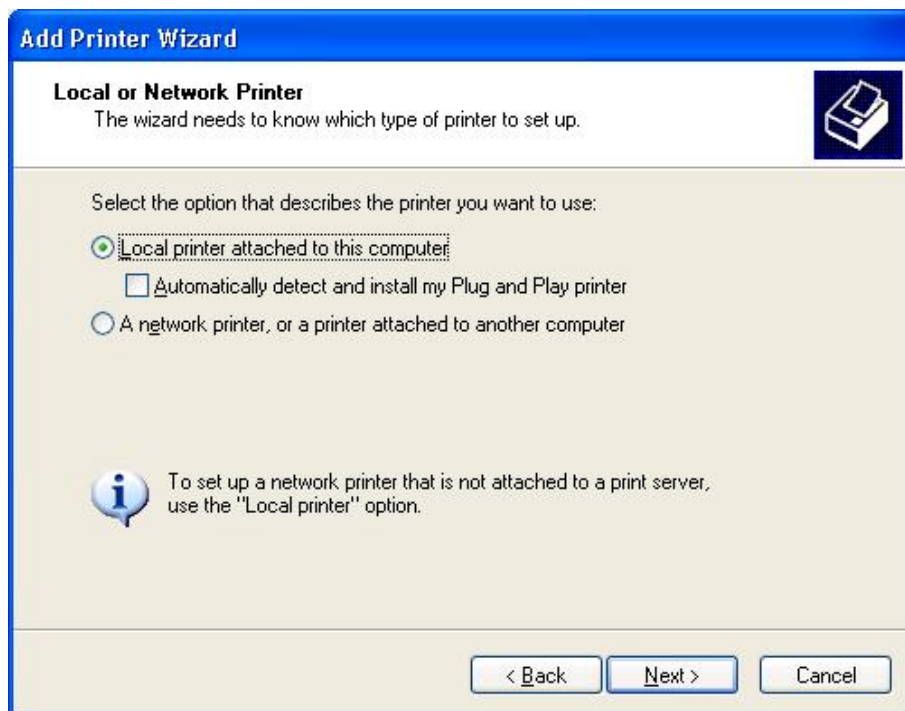
Or select **Add New Printer** if the print server is connected to a printer that hasn't been installed before and does not appear in the list.



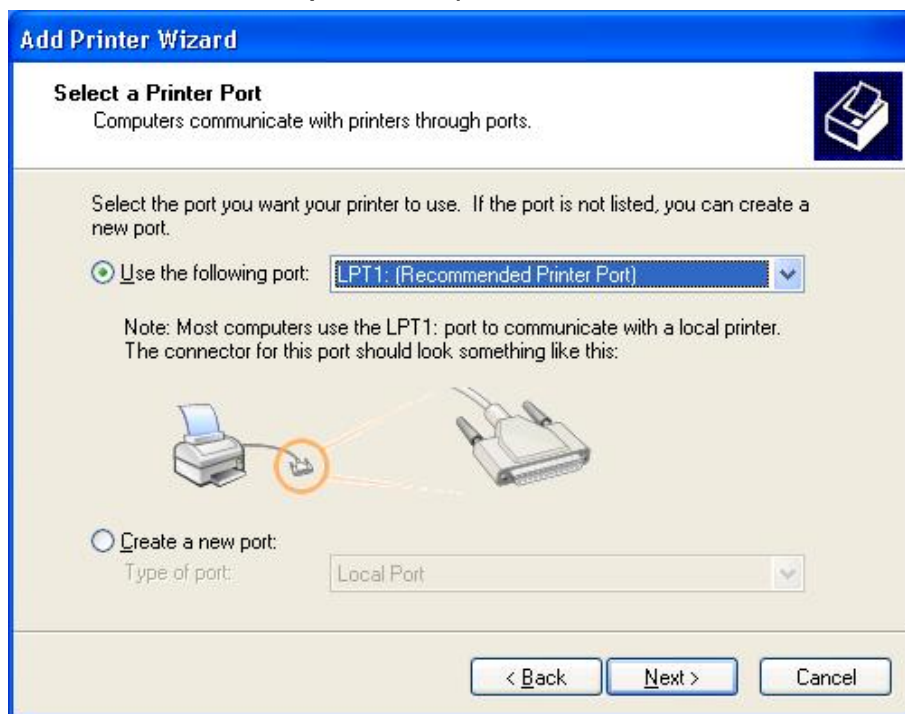
8. Click **Add New Printer** to launch **Windows Add Printer Wizard**.



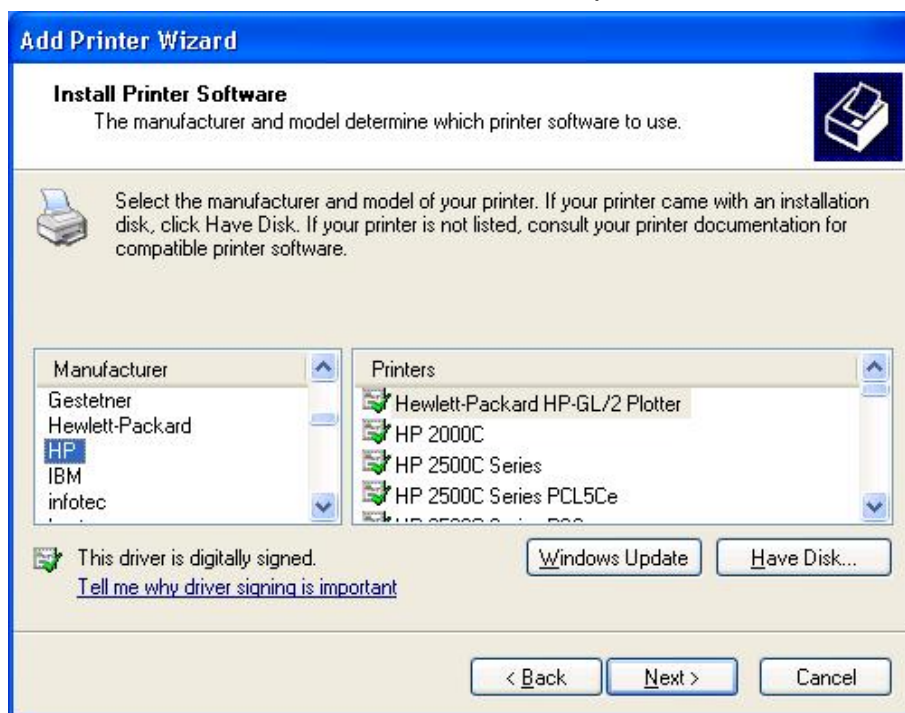
9. Click **Next** and select **Local Printer**, make sure the **Automatically detect and install my Plug and Play printer** check box is **NOT** checked. Then click **Next**.



10. Make sure the **Use the following port** radio-button is clicked and select **LPT1: (Recommended Printer Port)** from the pull-down list. Then click **Next**.

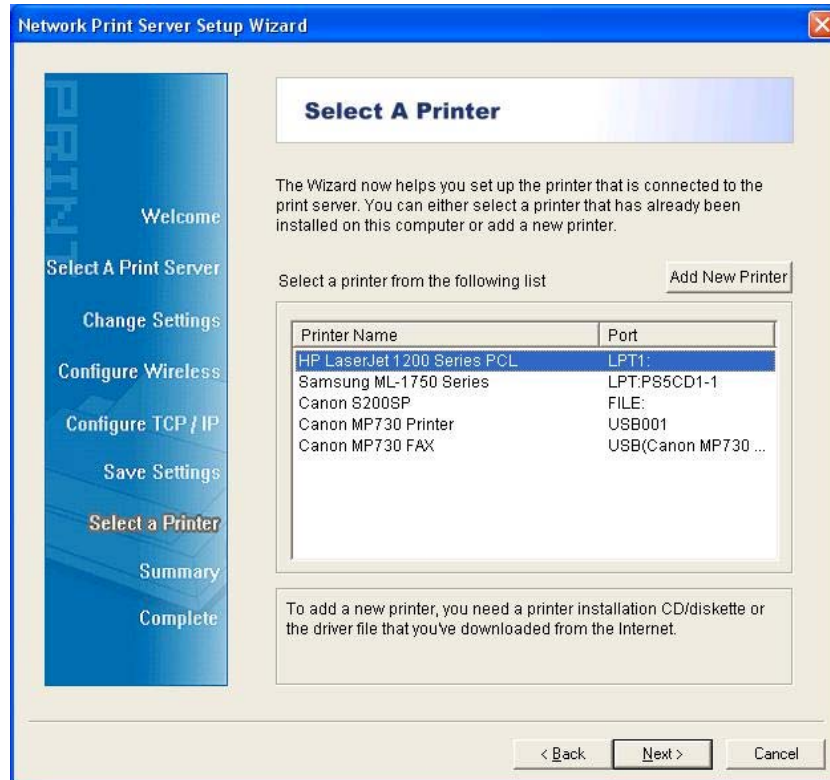


11. Select **Manufacturer** and **Printer** from the lists of printer's driver. Then click **Next**.

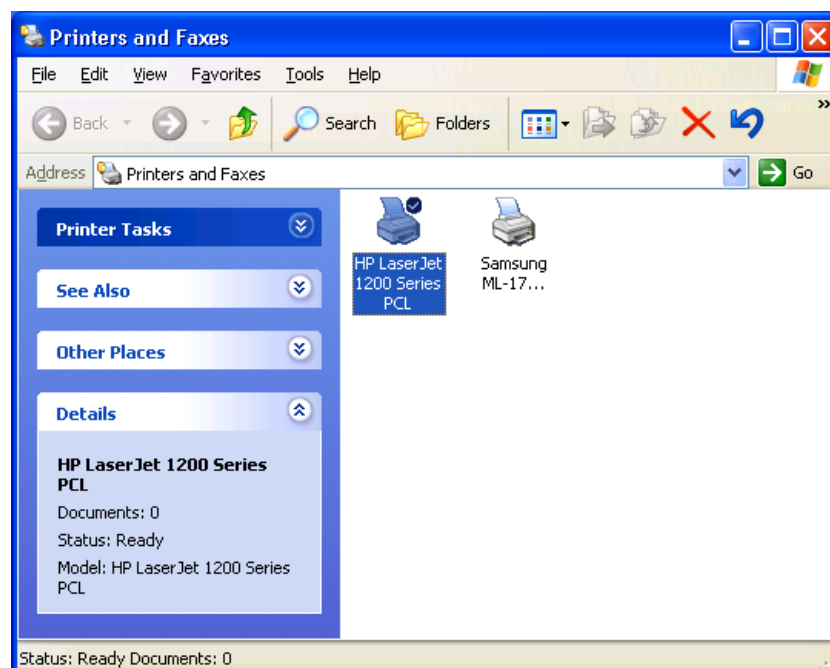


12. If you already have the printer's driver installed, you will be asked whether to keep it or to replace it. Click **Next**. Supply a name for the printer and choose whether you want to make it your default printer. Then click **Next**.

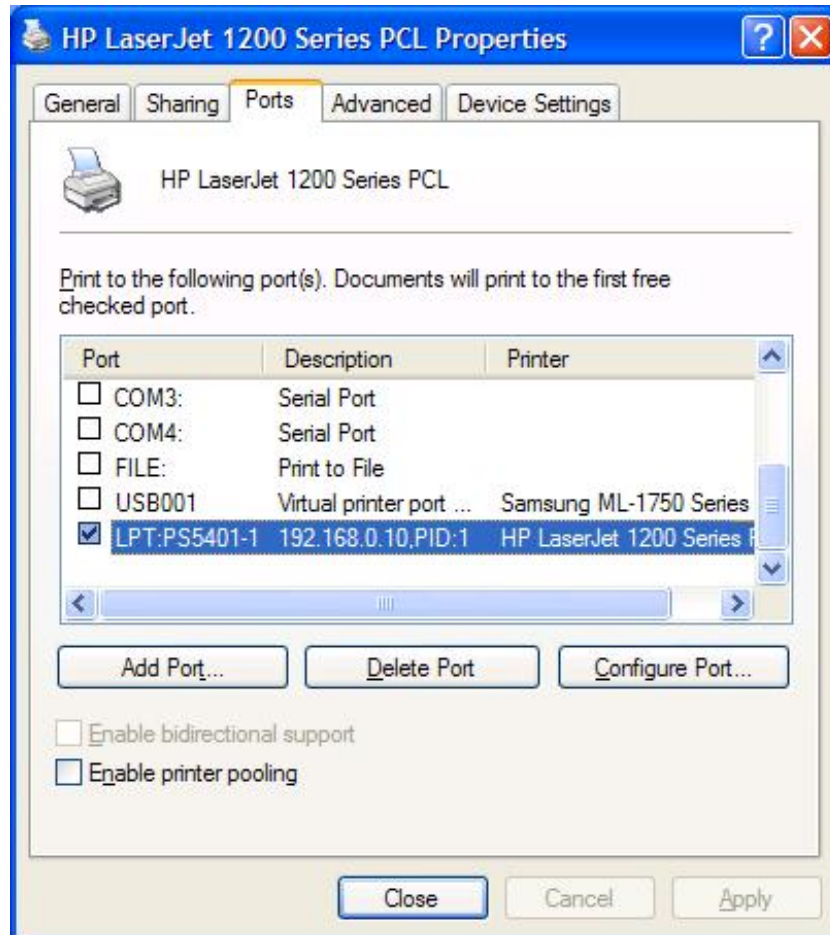
13. Then, choose whether you want to share the printer with other network users, print a test page (please select **No.**), etc. Select the appropriate radio-button and click **Next** and **Finish**.
14. In the setup wizard, finish the installation by highlighting the installed printer in the **Select a Printer** list and click **Next > Finish**.



15. From Windows system, go to **Start > Printers and Faxes** and highlight your newly installed printer.



16. Right-click, select **Properties** > **Ports** and verify that the print server's port appears.



17. Go to **General**; click **Print Test Page** to verify the configuration.

18. Done.

Note: If you wish to install more print servers, start setup wizard from your Windows Start menu: **start** > **All Programs** > **Network Print Server** > **PSWizard** and repeat the installation procedure.